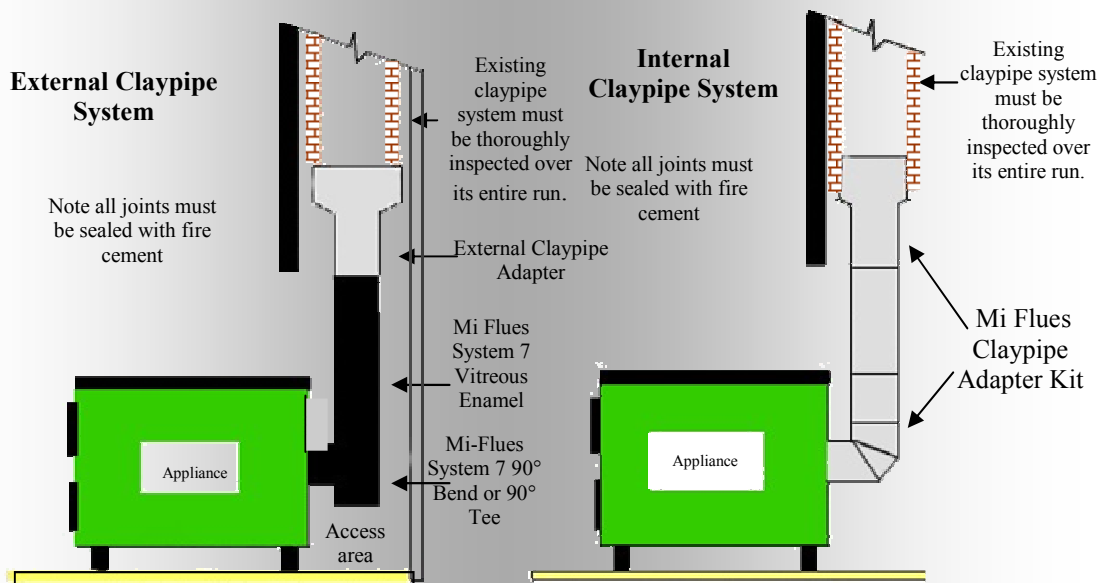
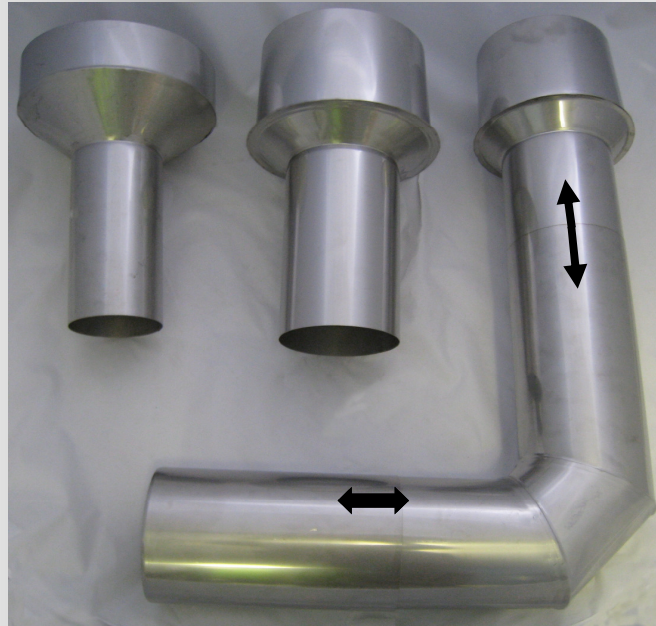


Mi-Flues

FLUE & CHIMNEY SYSTEMS

CLAY ADAPTORS



316 Grade Clay Adaptors

DESIGN & SPECIFICATION

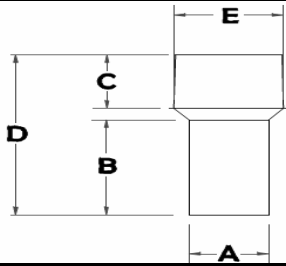
Mi Flues Clay Adaptors are specially developed products to ensure a hassle free connection from a solid fuel appliance to a clay lined chimney system.

Mi Flues Clay Adaptors are manufactured from a high quality 316 grade stainless steel. They have been specifically engineered to give an authentic visual look while at the same time ensuring years of trouble free use.

Mi Flues Clay Adaptors are suitable for use on domestic appliances burning solid fuel. All clay adaptors have been designed to ensure quick, safe and simple installations. All components should be installed with the male end dropping into the appliance or socket on the lower section. All joints must be sealed with a suitable sealant (Fire cement).

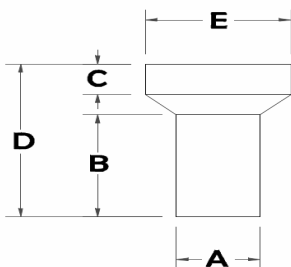
Mi Flues can also manufacture offset and special clay adaptors to order.

INTERNAL CLAY ADAPTOR



(8") 200mm INTERNAL CLAY LINER				
Diameter (A)	(B)	(C)	(D)	(E)
(5") 118mm	245	140	415	197 Reducing
(6") 143mm	245	140	415	197 Reducing
(7") 172mm	245	140	415	197 Reducing
(8") 198mm	245	140	415	197 Reducing
For (6") 150mm Clay liner (E) = 150mm Reducing				
For (7") 178mm Clay liner (E) = 176mm Reducing				
For(9") 225mm Clay liner (E) = 223mm Reducing				

EXTERNAL CLAY ADAPTOR



Mi-Flues has adopted a policy of continuous product review, and in the interests of development and improvement the Company reserves the right to vary the appearance and performance of any of its products without prior notice.

(8") 200mm EXTERNAL CLAY LINER				
Diameter (A)	(B)	(C)	(D)	(E)
(5") 118mm	245	70	345	248
(6") 143mm	245	70	345	248
(7") 172mm	245	70	345	248
(8") 198mm	245	70	345	248
For (6") 150mm Clay liner (E) = 200mm				
For (7") 178mm Clay liner (E) = 230mm				
For(9") 225mm Clay liner (E) = 265mm				

CLAY ADAPTOR KIT

Mi Flues clay adaptor kits have been specially developed to enable installer to complete installation using this highly versatile telescopic kit.

