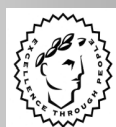


Mi-Flues

FLUE & CHIMNEY SYSTEMS

SYSTEM 39

Single Wall 316 "klik klak"
For condensing applications



System 39 Single Wall 304

System 39 is an engineered range of single wall factory made flue components offering an economical yet highly durable solution for less demanding applications.

The system comprises of straight length, bends, tees and a full range of accessories. MI-Flues can also supply non-standard adaptors and accessories so that you can connect to any boiler or chimney system.

APPLICATION

System 39 is suitable for the following applications where the system is not subjected to pressure.

- Flue gas system for gas and oil fired appliances.
- Suitable for relining existing chimneys using oil and gas fired appliances.
- Ventilation i.e. boiler rooms, laundries and kitchens.
- Fume extraction

It has been designed for flue gas temperatures not exceeding 260°C.

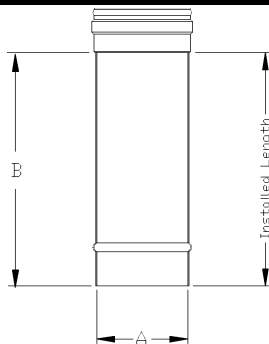
Note:

If the application involves handling corrosive fumes, MI Flues System 1 or System 19 product range made from 316-grade stainless steel should be used.

DESIGN AND MANUFACTURE

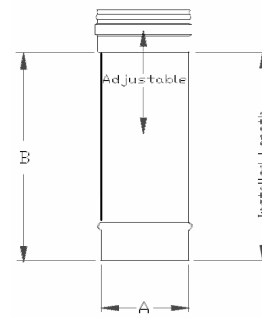
All lengths and flue gas carrying fittings are made from 304-grade stainless steel. This is a high quality annealed austenitic stainless steel. The pipe seams are continuously seam welded which provides an excellent gas sealed joint and offers minimum resistance to flue gas flow. Components are joined together by fitting the male end of the first section into the female end of the second section. Mi-Flues System 39 has a unique press fit jointing system, which provides structural stability. This jointing system ensures a quick, easy and excellent gas tightness properties. System 39 has a unique click clack system which does not require the use of a locking band.

LENGTHS



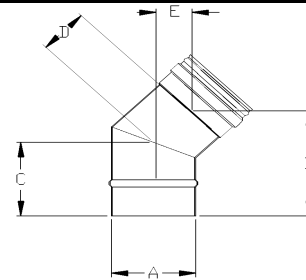
| (A) Diameter | (B)250 | (B)500 | (B)1000 | (B)1250 |
|--------------|--------|--------|---------|---------|
| 100 | 196 | 446 | 946 | 1197 |
| 125 | 196 | 446 | 946 | 1197 |
| 150 | 196 | 446 | 946 | 1197 |
| 180 | 196 | 446 | 946 | 1197 |
| 200 | 196 | 446 | 946 | 1197 |

ADJUSTABLE LENGTH



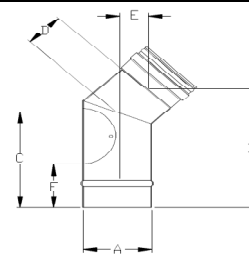
| Product | Diameter (A) | ADJ Short (B) Min-Max | ADJ Long (B) Min-Max |
|---------|--------------|-----------------------|----------------------|
| Sys.39 | 100 | 250-400 | 500-900 |
| Sys.39 | 125 | 250-400 | 500-900 |
| Sys.39 | 150 | 250-400 | 500-900 |
| Sys.39 | 180 | 250-400 | 500-900 |
| Sys.39 | 200 | 250-400 | 500-900 |

45° BEND



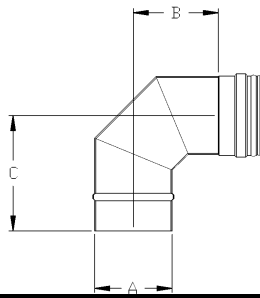
| Product | Dia. | (A) | (B) | (C) | (D) | (E) |
|---------|------|-----|-----|-----|-----|-----|
| Sys.39 | 100 | 100 | 130 | 100 | 40 | 28 |
| Sys.39 | 125 | 125 | 133 | 100 | 50 | 35 |
| Sys.39 | 150 | 150 | 145 | 110 | 53 | 38 |
| Sys.39 | 180 | 180 | 165 | 120 | 60 | 45 |
| Sys.39 | 200 | 200 | 160 | 115 | 65 | 45 |

45° BENDS WITH DOOR



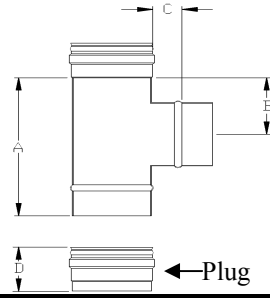
| DIA(A) | (B) | (C) | (D) | (E) | (F) |
|--------|-----|-----|-----|-----|-----|
| 100 | 173 | 135 | 52 | 35 | 58 |
| 125 | 195 | 163 | 55 | 35 | 60 |
| 150 | 190 | 155 | 55 | 35 | 60 |
| 180 | 242 | 195 | 67 | 48 | 70 |
| 200 | 250 | 200 | 70 | 50 | 74 |

90° BEND



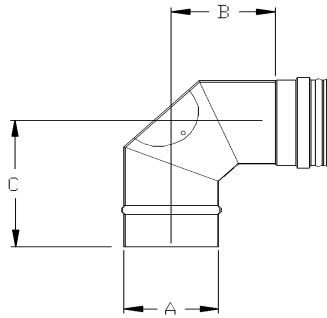
| Product | Dia. (A) | (B) | (C) |
|---------|----------|-----|-----|
| Sys.39 | 100 | 85 | 145 |
| Sys.39 | 125 | 100 | 150 |
| Sys.39 | 150 | 110 | 165 |
| Sys.39 | 180 | 135 | 190 |
| Sys.39 | 200 | 145 | 200 |

90° TEE



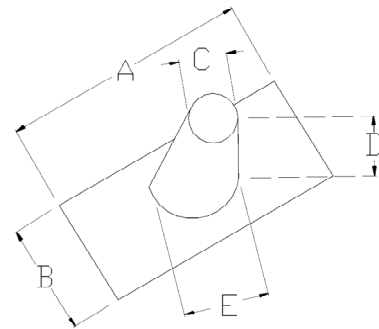
| Product | Dia. | (A) | (B) | (C) | (D) |
|---------|------|-----|-----|-----|-----|
| Sys.39 | 100 | 250 | 100 | 30 | 35 |
| Sys.39 | 125 | 255 | 100 | 30 | 35 |
| Sys.39 | 150 | 255 | 100 | 30 | 35 |
| Sys.39 | 180 | 283 | 116 | 32 | 35 |
| Sys.39 | 200 | 305 | 125 | 30 | 35 |

90° BENDS WITH DOOR



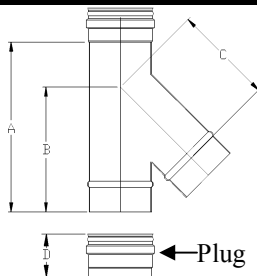
| Product | Dia. (A) | (B) | (C) |
|---------|----------|-----|-----|
| Sys.39 | 100 | 85 | 145 |
| Sys.39 | 125 | 100 | 150 |
| Sys.39 | 150 | 110 | 160 |
| Sys.39 | 180 | 135 | 190 |
| Sys.39 | 200 | 145 | 200 |

LEAD FLASSHING



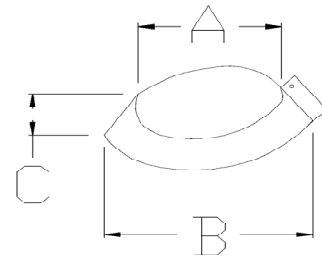
| Product | Dia. | (A) | (B) | (C) | (D) | (E) |
|---------|------|-----|-----|-----|-----|-----|
| Sys.39 | 100 | 450 | 450 | 100 | 140 | 220 |
| Sys.39 | 125 | 450 | 450 | 130 | 140 | 220 |
| Sys.39 | 150 | 450 | 450 | 130 | 140 | 220 |
| Sys.39 | 180 | 710 | 610 | 120 | 150 | 325 |
| Sys.39 | 200 | 710 | 610 | 120 | 150 | 325 |

45° TEE



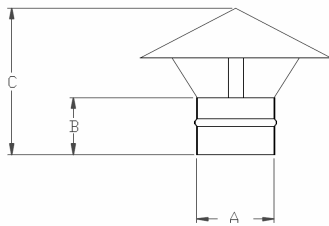
| Product | Dia. | (A) | (B) | (C) | (D) |
|---------|------|-----|-----|-----|-----|
| Sys.39 | 100 | 263 | 206 | 160 | 35 |
| Sys.39 | 125 | 275 | 235 | 200 | 35 |
| Sys.39 | 150 | 336 | 270 | 220 | 35 |
| Sys.39 | 180 | 366 | 298 | 257 | 35 |
| Sys.39 | 200 | 420 | 335 | 282 | 35 |

STORM COLLAR



| Product | Dia. | (A) | (B) | (C) |
|---------|------|-----|-----|-----|
| Sys.39 | 100 | 100 | 185 | 30 |
| Sys.39 | 125 | 125 | 175 | 30 |
| Sys.39 | 150 | 150 | 200 | 30 |
| Sys.39 | 180 | 180 | 235 | 35 |
| Sys.39 | 200 | 200 | 269 | 35 |

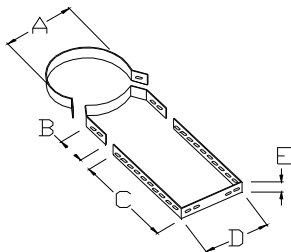
COWL



| Product | Dia. | (A) | (B) | (C) |
|---------|------|-----|-----|-----|
| Sys.39 | 100 | 100 | 90 | 165 |
| Sys.39 | 125 | 125 | 90 | 175 |
| Sys.39 | 150 | 150 | 90 | 180 |
| Sys.39 | 180 | 180 | 90 | 230 |
| Sys.39 | 200 | 200 | 90 | 235 |

Wall Bracket

A wall bracket provides lateral support to a chimney run. It should be used at 1.5 meter intervals. This component is adjustable between 80mm – 250mm off a wall face.



| Product | Dia. | (A) | (B) | (C) | (D) | (E) |
|---------|------|-----|-----|-----|-----|-----|
| Sys.39 | 100 | 100 | 45 | 258 | 152 | 20 |
| Sys.39 | 125 | 125 | 45 | 258 | 152 | 20 |
| Sys.39 | 150 | 150 | 45 | 258 | 152 | 20 |
| Sys.39 | 180 | 180 | 45 | 258 | 152 | 20 |
| Sys.39 | 200 | 200 | 45 | 258 | 152 | 20 |

INSTALLATION

Design

Mi-Flues system 39 operates most efficiently where there is a vertical run from the appliance to the terminal. A selection of bends are available to provide an offset from the vertical. The chimney should not make an angle more than 45° with the vertical, except where the flue is connected to the outlet of the appliance. The flue diameter should not be smaller than that of the outlet of the appliance. Access to the chimney for cleaning and inspection purposes may be provided with either a plugged tee located at the base of the chimney, or a bend with a gas tight access door.

Mi-Flues has adopted a policy of continuous product review, and in the interests of development and improvement the Company reserves the right to vary the appearance and performance of any of its products without prior notice.

Support

The weight of the chimney must be borne by the wall brackets. Where the chimney extends by 1.5m or more above the last support, it should be supported by guy wires, which are attached to the chimney with guy wire brackets. For more detailed information on flue outlet positioning see the appropriate Building Regulations. Mi-Flues system 39 uses an adjustable wall bracket, which extends of up to 250mm. Wall brackets should be no more than two metres apart.

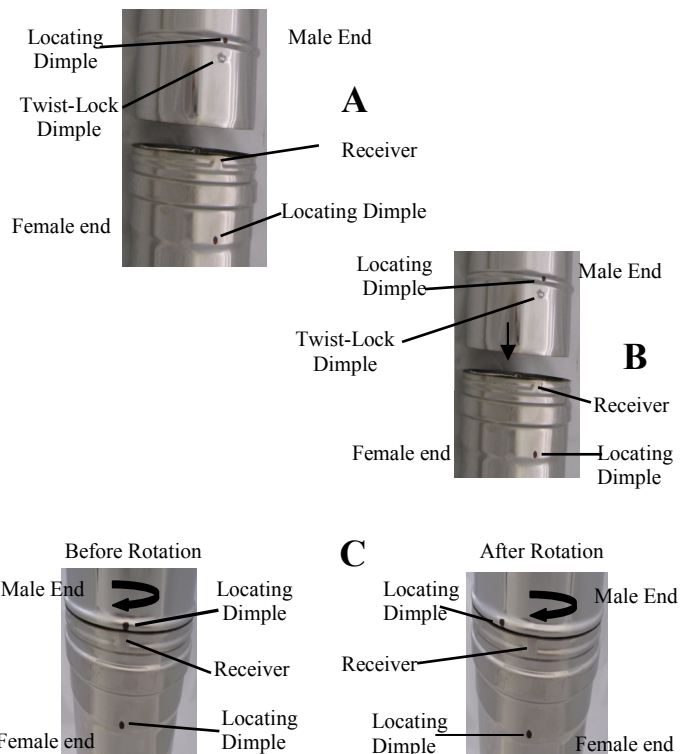
Chimney Termination

Where the chimney passes through the roof a storm collar and flashing must be fitted. Adjustable lead and rubber flashings are available for flat, pitched and cladded roofs. A storm collar must be fitted to the flue immediately above the flashing, and the joint should be sealed with a waterproof sealant. For oil-fired appliances a stainless steel cowl is attached to the end of the flue pipe.

SYSTEM 39 FLUE SYSTEM

Joining Technique

1. Select the components required for installation.
2. Ensure the male end of the liner chimney system always points downwards in the direction of the heating appliance.
3. Align the locating dimple and twist-lock dimple on the male end of the chimney liner system with the locating dimple and receiver on the female end of the chimney system as shown on Diagram A.
4. Firmly push both chimney sections together ensuring to keep locating dimple system in complete alignment, Diagram B.
5. Hold lower chimney section and gently twist uppermost section to achieve desired twist lock system, Diagram c.



YOUR LOCAL MI-FLUES STOCKIST IS:

Mi-Flues
FLUE & CHIMNEY SYSTEMS

Mi-Flues Ltd
Summerhill Enterprise Ctr.
Summerhill
County Meath
IRELAND
T: +353 46 95 58030
F: +353 46 95 58034
E: sales@miflues.ie
W: www.miflues.ie